



AUSTRALIAN NATIVE HERRINGBONE

BY HURFORD'S

New to Hurford's engineered range is **Australian Native Herringbone** pre-finished in two iconic species Blackbutt and Spotted Gum. Featuring a micro bevel edge profile and finished in a modern matt smooth surface, to achieve a floor that's earthy and effortless.

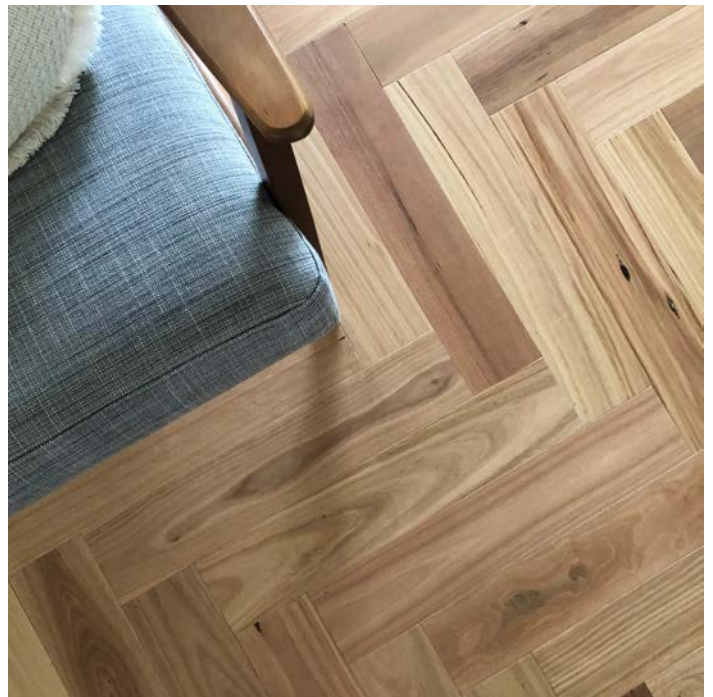
Consistent in quality and structural stability, Australian Native Herringbone is constructed using a low shrinkage, ecofriendly Hevea core and a tough Australian hardwood lamella.

Utilising the latest in environmentally friendly UV coatings, the 6 coat system delivers a floor finish similar to a stylish oiled floor but with the durability and protection a UV lacquer offers. Australian Native Herringbone engineered flooring provides a wow factor for any interior space.

"Installing Australian Native Herringbone requires a high level of skill and Hurford's recommend only qualified tradespeople with the relevant skill levels undertake the installation."



Australian Native Herringbone - Spotted Gum



Australian Native Herringbone - Blackbutt



AUSTRALIAN NATIVE HERRINGBONE

BY HURFORD'S

Australian Native HERRINGBONE Specifications:

Species: Blackbutt + Spotted Gum

Core Material: Hevea

Locking System: Tongue and Groove
(ends and sides)

Side Profile: Tongue and Groove

End Profile: End Matched

Edge Profile: Micro Bevel

Size: 120mm x 13.5mm

Wear Layer: 4mm lamella

Length: 600mm

Coating: UV Cured 6 Coat
Kluppp System

Coverage: 0.576 m²/box

Packaging: 8 pieces per box
Set A (Left) + Set B (Right)

Install Suitability: Direct glued

Install Sub-Floor Heating: No

Install Over: Wood, concrete, plywood &
plywood overconcrete

Colour Match Accessories: Yes



Manufactured By Hurford Wholesale

QLD (07) 3442 6300 | VIC & TAS (03) 8794 3300

NSW (02) 4646 1406 | SA & NT (08) 8376 6694

Email: info@hurfordwholesale.com.au | Web: www.hurfordflooring.com.au

